



Project By

**Sri Sai Nandana  
Builders**

WE BUILD YOUR DREAM HOME



SRI SAI NANDANA

**ROYAL**

• AN CRAFTED BUDGET APARTMENT •



2 & 3 BHK LUXURY FLATS

3 & 2 BHK Luxurious Apartments

@ Electronic City Phase-1, Jigani Hobli



[www.nandanaroyal.com](http://www.nandanaroyal.com)



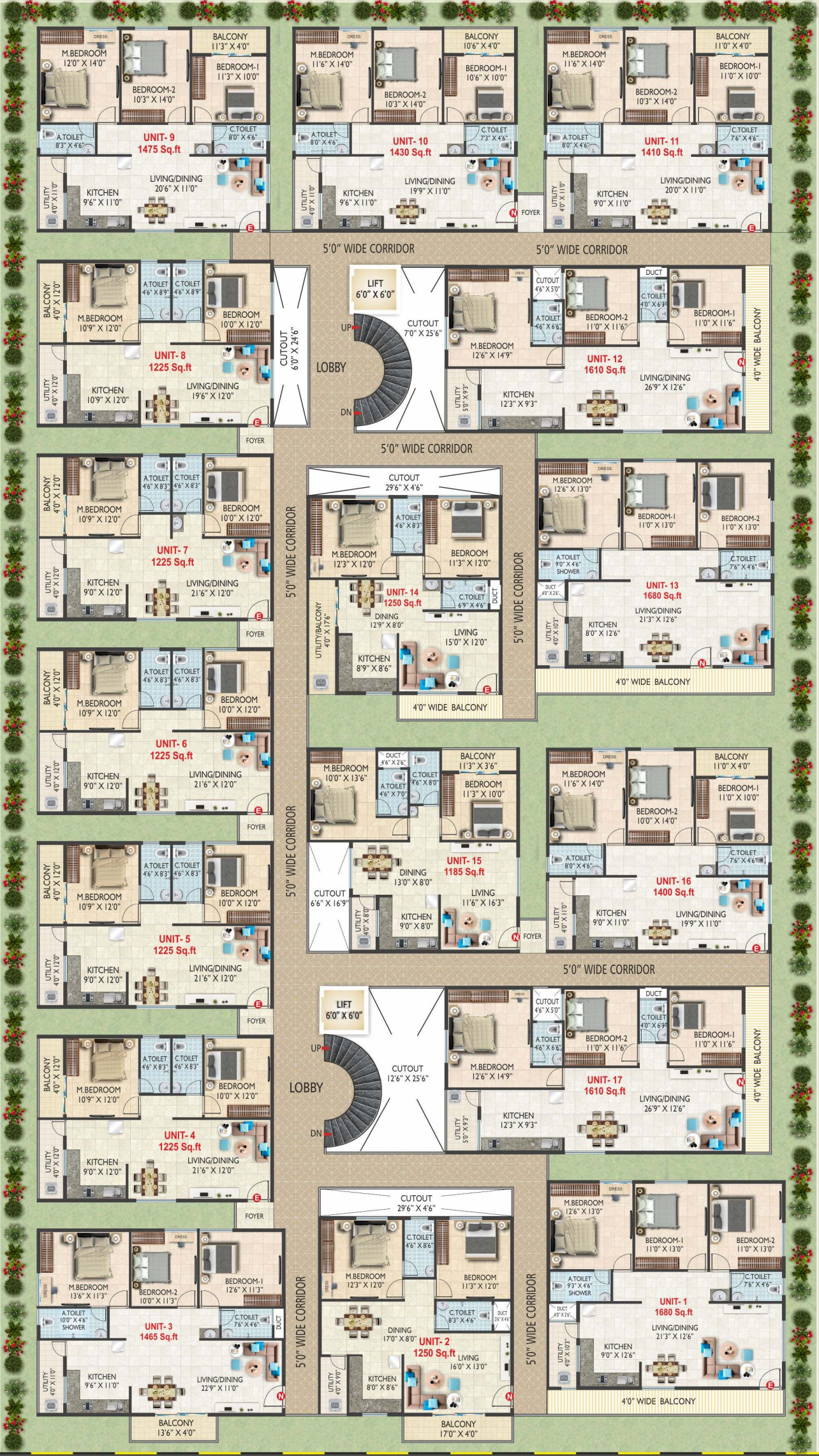
TYPICAL FLOOR PLAN AREA STATEMENT IN SQ.FTS

UNIT NO	TYPE	AREA	FACING
001	3 BHK	1680 Sq.ft.	EAST
002	2 BHK	1250 Sq.ft.	NORTH
003	3 BHK	1465 Sq.ft.	NORTH
004	2 BHK	1225 Sq.ft.	EAST
005	2 BHK	1225 Sq.ft.	EAST
006	2 BHK	1225 Sq.ft.	EAST
007	2 BHK	1225 Sq.ft.	EAST
008	2 BHK	1225 Sq.ft.	EAST
009	3 BHK	1475 Sq.ft.	EAST
010	3 BHK	1430 Sq.ft.	NORTH
011	3 BHK	1410 Sq.ft.	EAST
012	3 BHK	1610 Sq.ft.	NORTH
014	2 BHK	1250 Sq.ft.	NORTH
015	2 BHK	1185 Sq.ft.	EAST
016	3 BHK	1400 Sq.ft.	EAST
017	3 BHK	1610 Sq.ft.	NORTH



CLOSE TO EVERYTHING

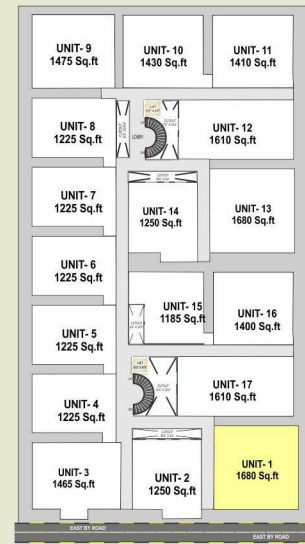
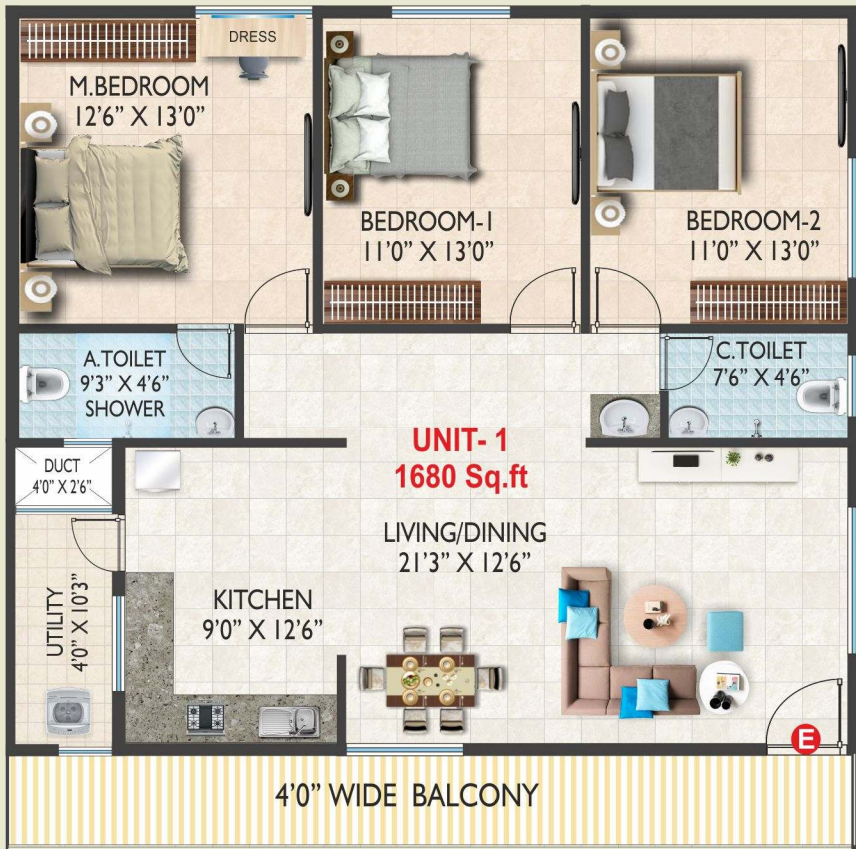
-  PRIME LOCATION
-  METRO STATIONS
-  SHOPPING MALLS
-  RING ROAD
-  HEALTH CENTERS
-  CORPORATE COMPANIES
-  SCHOOLS & COLLEGES
-  FAST FOOD & RESTAURANTS
-  BANKS
-  ENTERTAINMENT ZONES



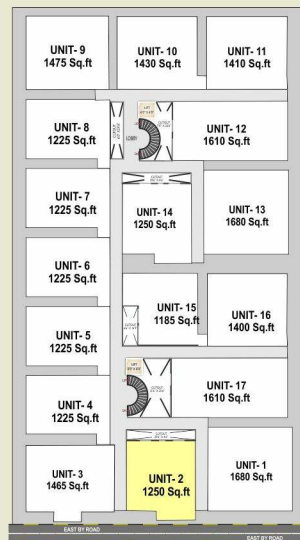
EAST BY ROAD

EAST BY ROAD

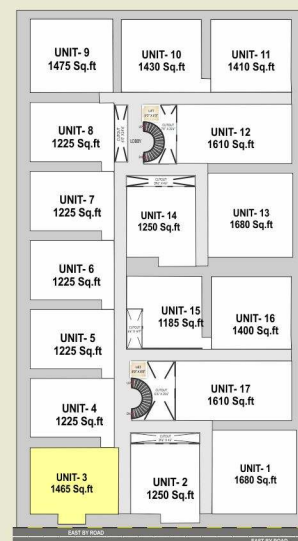
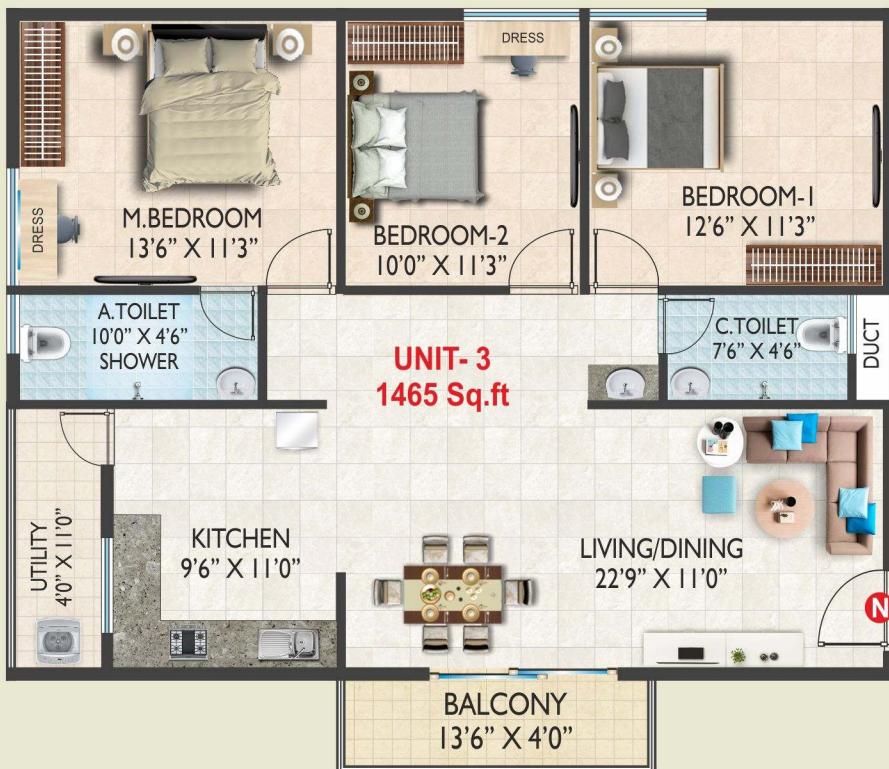
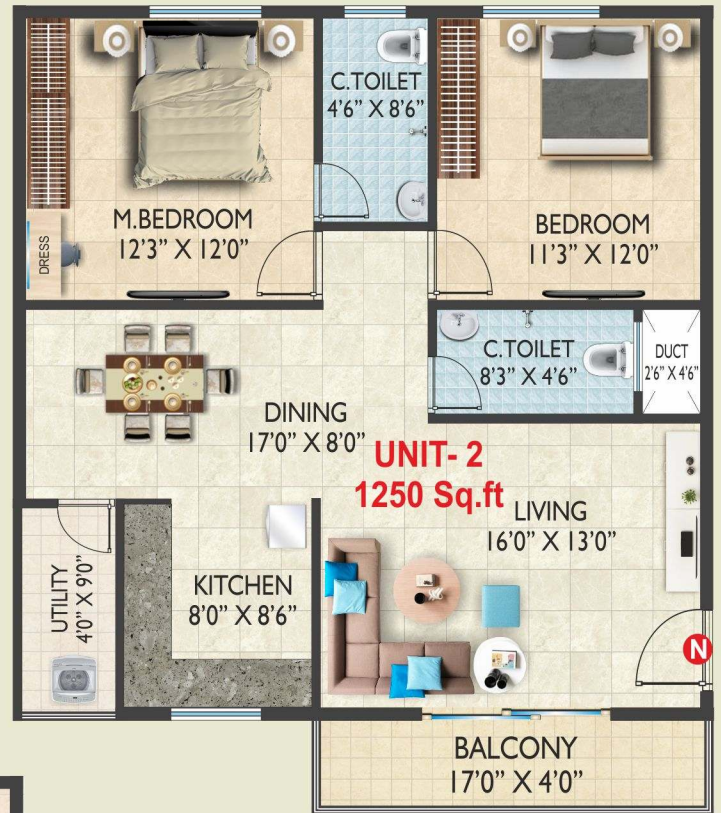
TYPICAL FLOOR PLAN



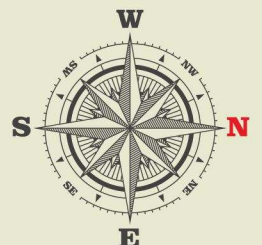
KEYPLAN

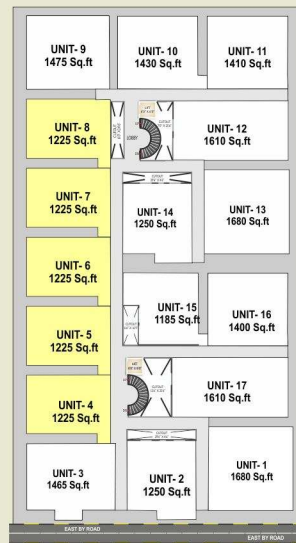
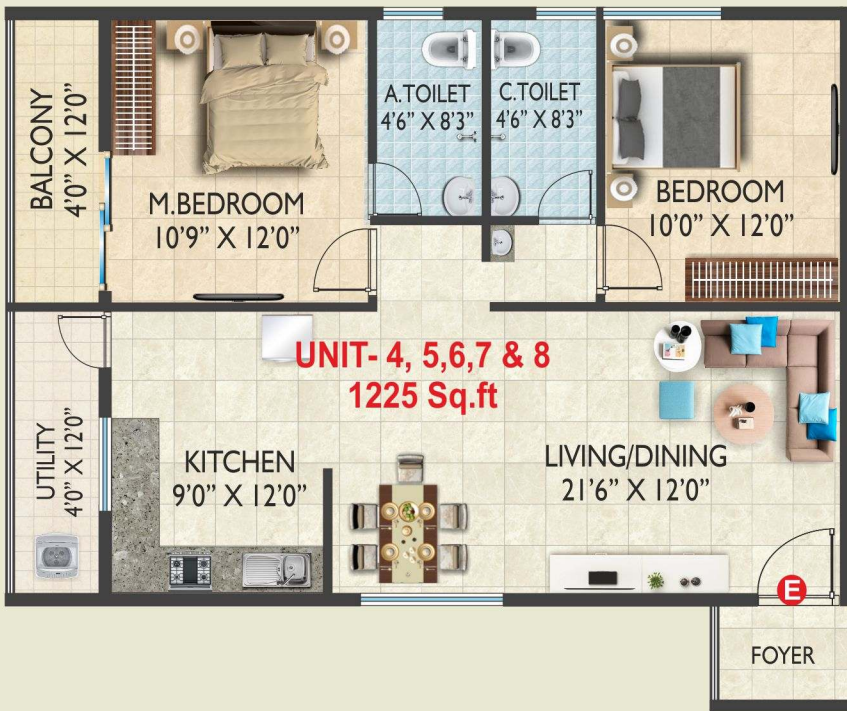


KEYPLAN

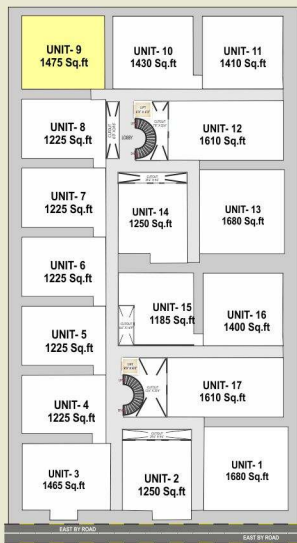


KEYPLAN

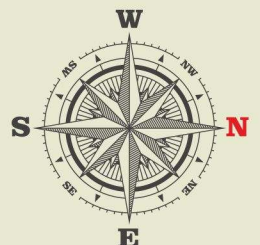
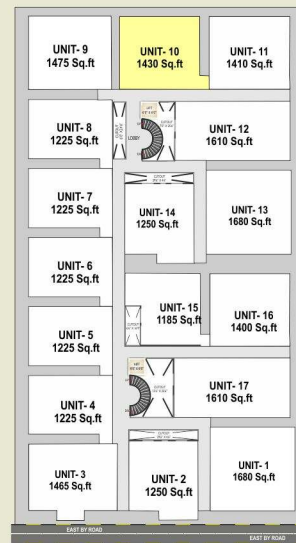
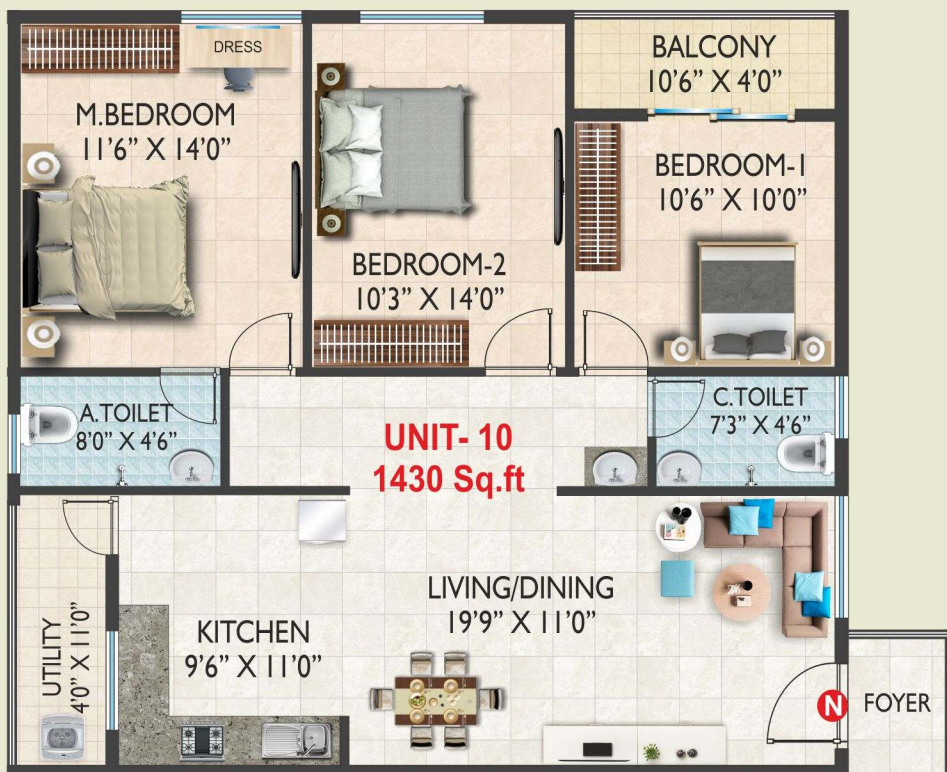




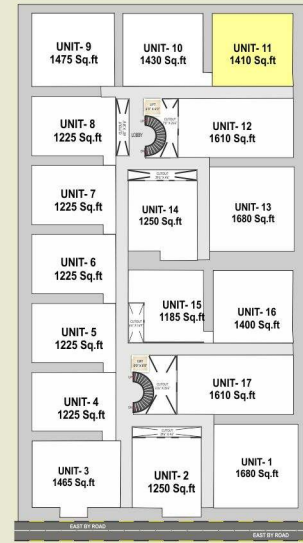
KEYPLAN



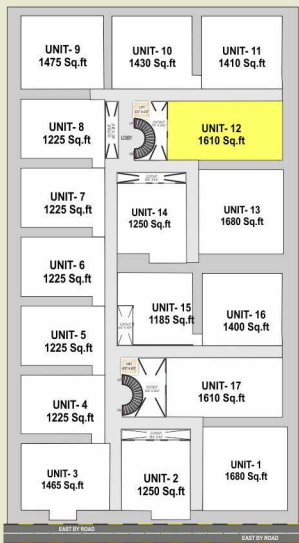
KEYPLAN



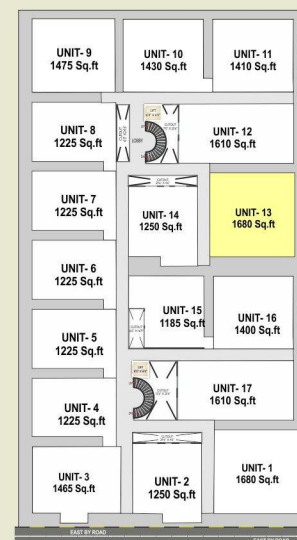
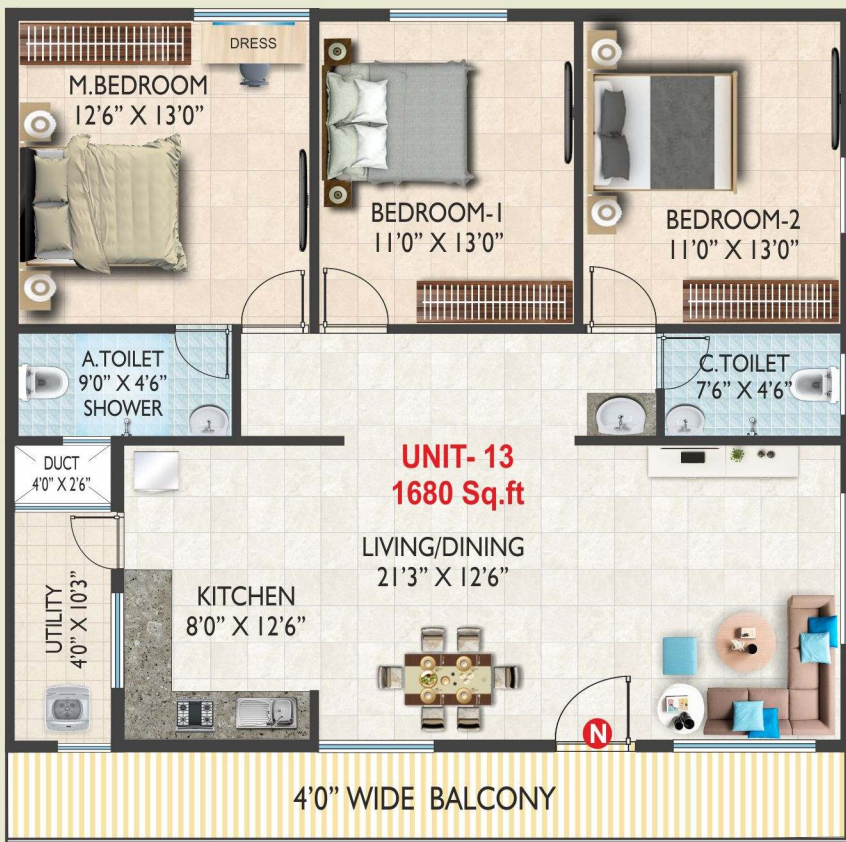
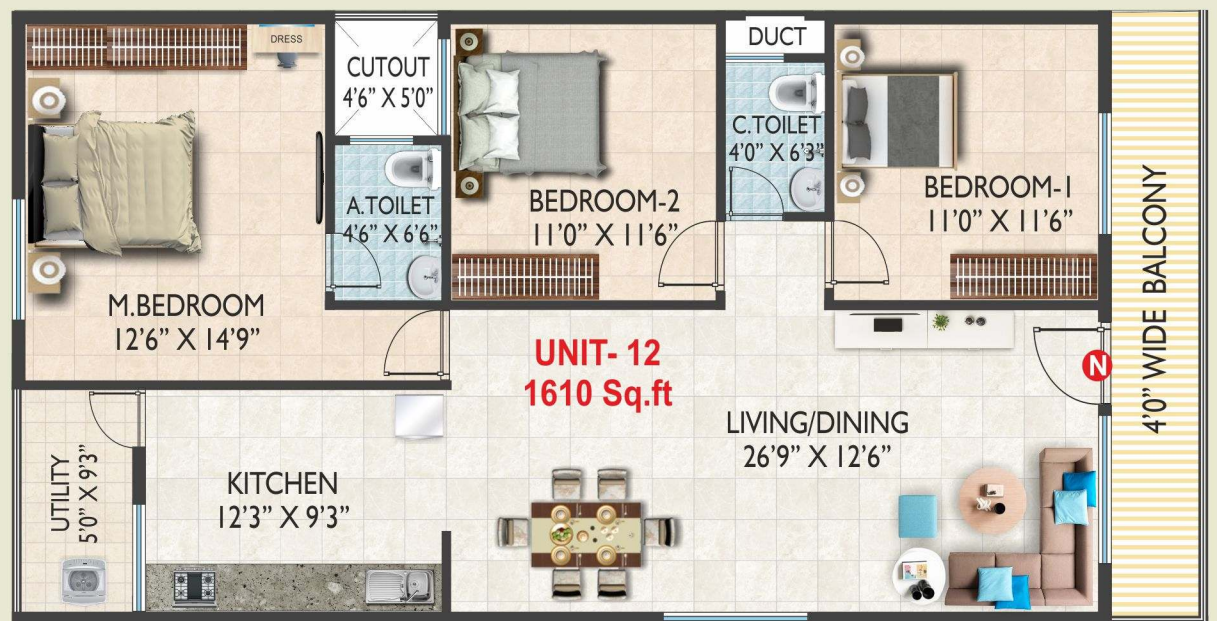
KEYPLAN



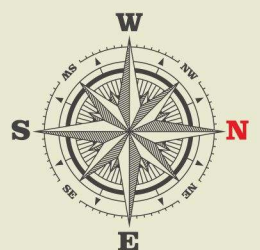
KEYPLAN

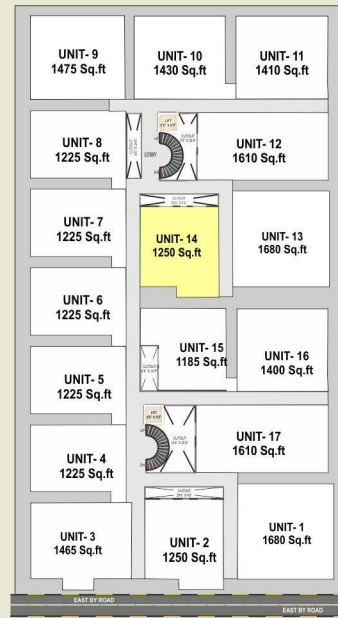
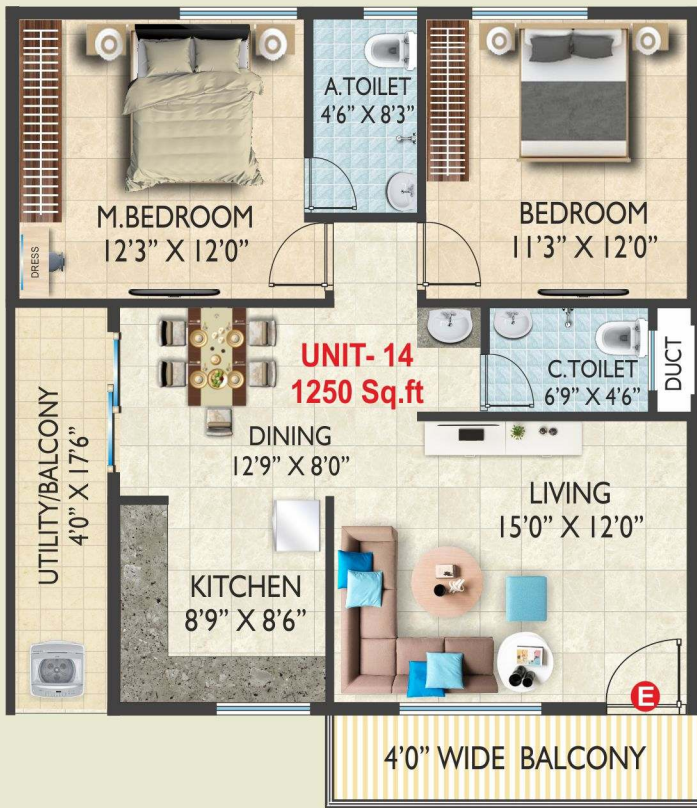


KEYPLAN

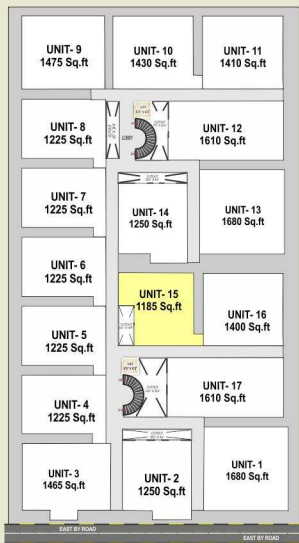


KEYPLAN

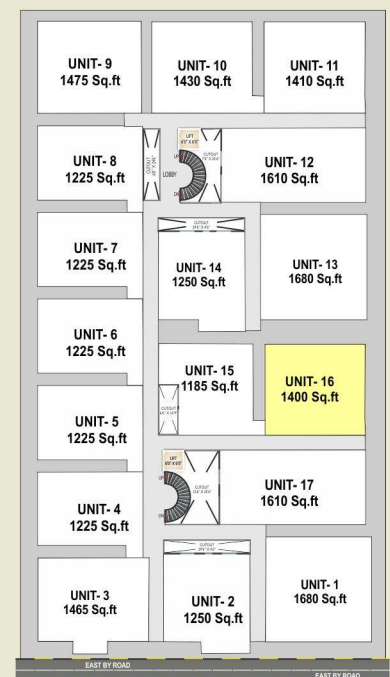
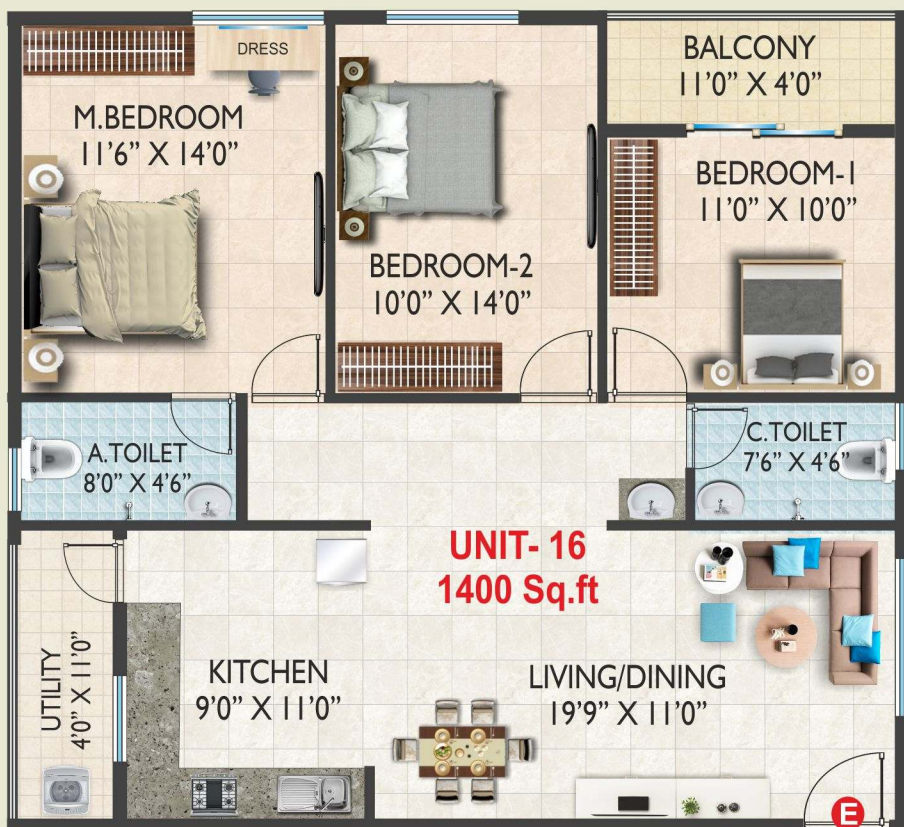
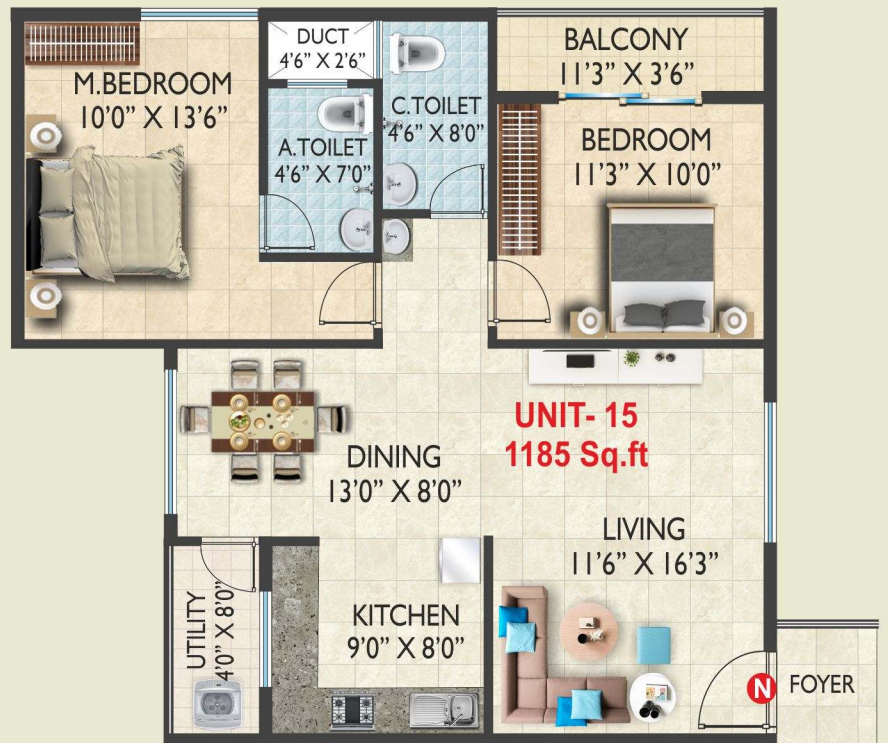
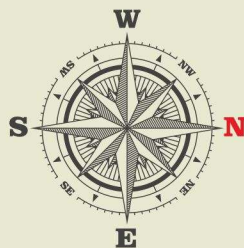




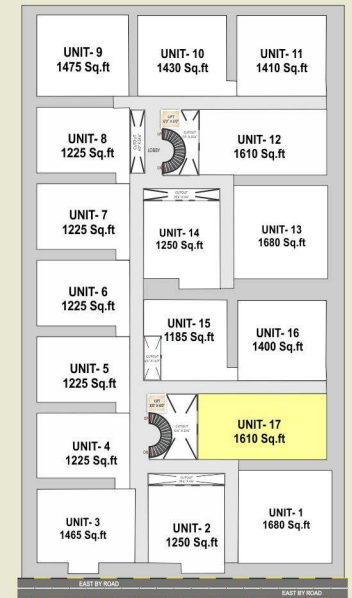
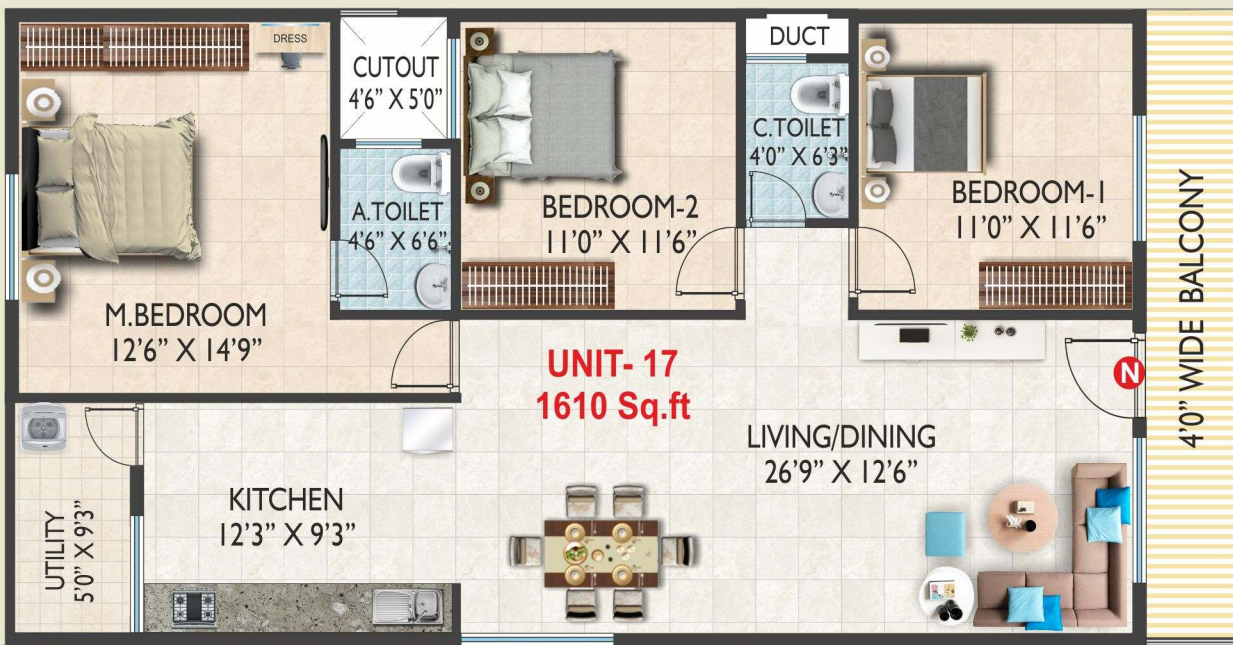
KEYPLAN



KEYPLAN



KEYPLAN



KEYPLAN



**BUILDING FEATURES**

- 3 BHK - 1400 - 1680 Sq.ft.
- 2 BHK 1250 - Sq.ft.
- UNIQUE BUILDING DESIGN
- 85 FLATS
- G+4
- NO COMMON WALLS



Introducing "Sri Sai Nandana Royal" A BMRDA Approved well planned 2 and 3 BHK Residential Apartments is your own heaven of peace, Prosperity & happiness. The project is situated at Electronic City phase, IT companies connecting electronic city phase I and Jigani Hp biocon etc... Sri Sai Nandana Royal" is designed as the perfect place for modern living, Combining quality and value with attention to detail and contemporary design. "Sri Sai Nandana Royal" is a striking architectural development of total 85 units. Sri Sai Nandana Builders always strived to achieve excellence in the field of construction and works continuously to ensure total satisfaction for our clients. The company always try to attain perfection in their passion. Sri Sai Nandana Builders ensures utmost satisfaction by maintaining quality, completing the project as per schedule and committed towards building a "value for money" concept.

"Sri Sai Nandana Royal" is an apartment project of "Healthy Wealthy Homes" deriving the phrase from the fact that the company focus its whole effort to create homes that contribute to enhanced health for community living in the Grandeur. Here, you live in a quite tranquil environment with lush green surroundings in the lap of nature. The homes are architectural marvel with exquisite designs and fully compliant. with Vaastu principles.





# SPECIFICATIONS



## STRUCTURE :

- RCC framed structure with necessary footing columns and beams. All of Reinforced cement concrete as per structural design.
- Walls of solid concrete blocks.



## DOORS :

- Main Door-Teak wood Door & frame
- Internal doors-hard wood frame and Skin Doors



## WINDOWS :

- 2 & 3 track Aluminum frames with glass panel sliding shutters with safety grills.



## POWER BACKUP:

- Power Back-up for Common Area Including Individual Flat only Four Points \*\*



## LIFT :

- 2 nos Automatic Lift



## SECURITY SYSTEMS :

- Security personnel to patrol the community round the clock.



## FLOORING :

- Living, Dining, Bedroom, Kitchen – Vitrified 2' X 4' Tiles
- Balconies / Utility / Bathrooms – Anti skid Ceramic tiles
- Bathrooms Walls–ceramic tiles dado up to 7'0"
- Lobby & Stair case area – Granite



## PLASTERING :

- All internal walls are smoothly plastered
- External walls: Sponged finished plastering.



## RAILINGS :

- All the Balconies have 4" Concrete Block work.



## KITCHEN :

- Black polished granite with stainless steel sink. Ceramic tiles 30" above the granite platform.
- Provision for aqua-guard & Refrigerator.
- Provision for washing machine in utility.



## CAR PARKING :

- Covered Car Parking



## BATHROOM FITTING

- Fitting & fixtures – Hindware or equivalent.
- Cp fitting – Jaquar or cera or equivalent.
- Provision for exhaust fan & geyser.



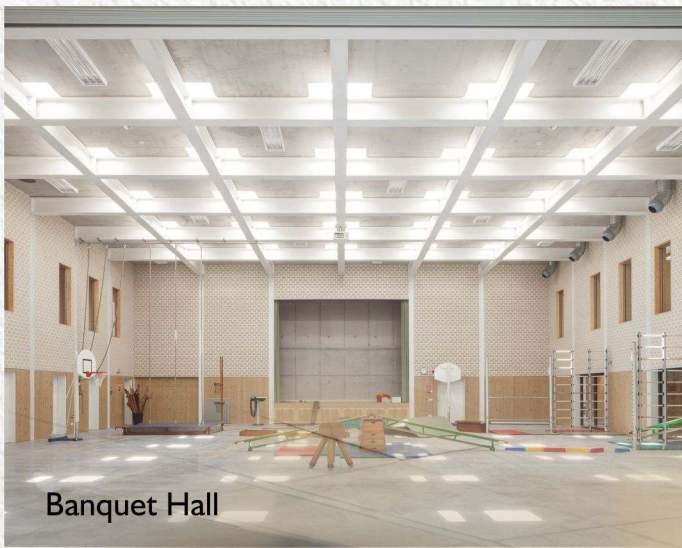
## PAINTING :

- Interior -2 coat Tractor Emulsion paint with roller finish and OBD for ceiling.
- Exterior - Water proof coloured cement based & textured paint at selective places.
- Grills - Enamel paint for grills.



## ELECTRICAL :

- Fire resistant electrical wires. Concealed copper wiring with adequate light points of anchor 'ROMA' make or equivalent.
- Telephone point at living room.
- Cable point at living & master bedroom.
- AC point provisions in master bedroom.



Banquet Hall



CCTV Surveillance



Gym

### BEST IN AMENITIES



Gym



Banquet Hall



CCTV Surveillance



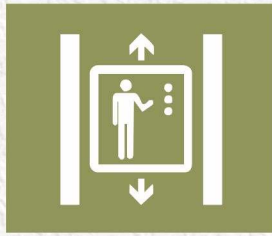
Power Back up for common area with lift & Individual flats fully (any four Points)\*\*



STP



Rain Water Harvesting



Automatic Lift



Car Parking



24 Hrs Security



24 Hrs Water Supply



# How To Reach Our project



SCAN FOR GOOGLE MAP



Project By

**Sri Sai Nandana Builders**  
WE BUILD YOUR DREAM HOME

Project @ : **Sri Sai Nandana Royal**  
Sy No.108/4, Upkar Meadows, Kyalasanahalli Taluk,  
Jigani, TMC Khata No. 4469/108/4, Electronic City Post,  
Near by Landmark Treamis School & Mitha Hospital,  
Bengaluru – 560105.

For Booking Contact :



**9886 955 525**



[nandana.promoters@gmail.com](mailto:nandana.promoters@gmail.com)



[www.nandanaroyal.com](http://www.nandanaroyal.com)

BANK APPROVED BY :



Disclaimer : The contents of this brochure are purely conceptual and no legal binding on the developer. The developer reserves the right to amend the plans and specifications without prior notice